

SCALE: AS NOTED
 PROJECT MANAGER: TODD A. OBERG, PE
 PROJECT ENGINEER: TODD A. OBERG, PE
 DESIGNER: CHRISTOPHER WISCOMB
 ISSUE DATE: 5/18/2015

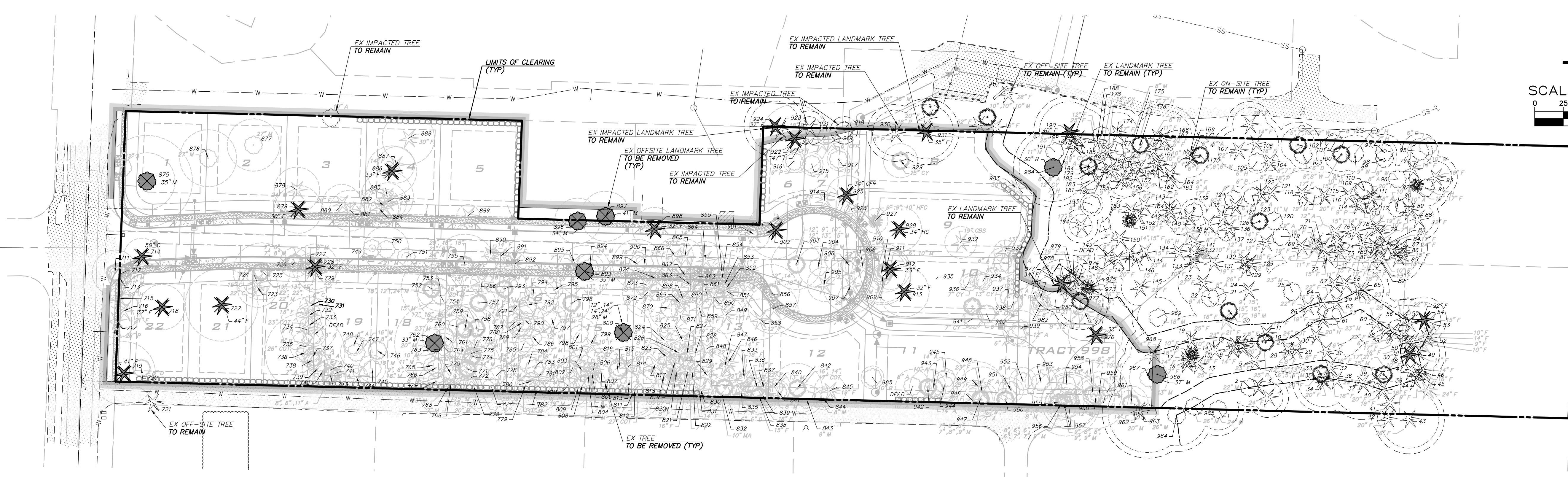
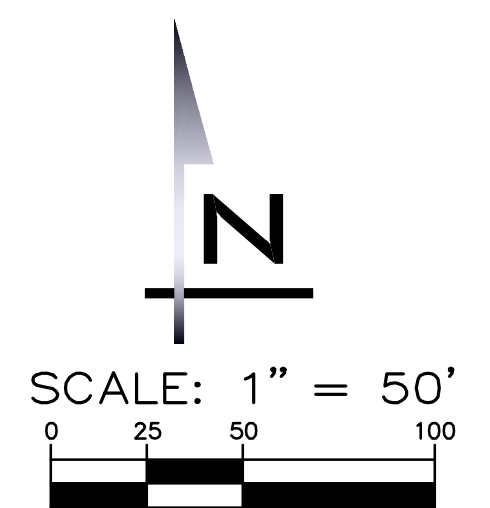
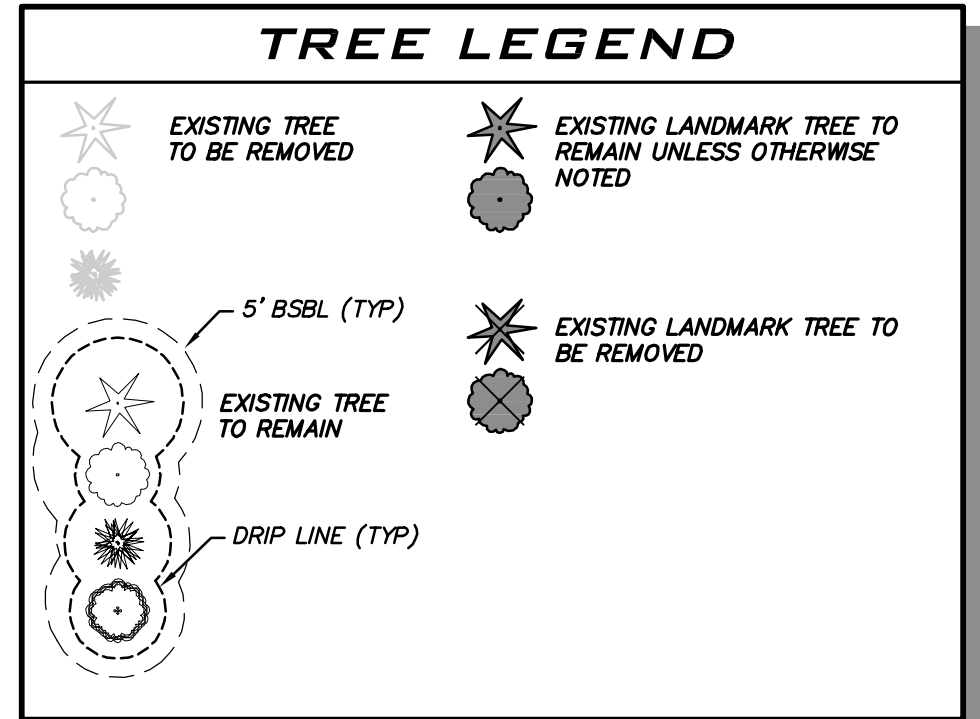


Figure 1: Tree Inventory - Proposed Action & Brief Definition

	Removal	Impacted	Retained	Total
Landmark (>30")	20 = 4.4%	1 = 0.2%	7 = 1.5%	28 = 6.1%
Significant (6" - 30")	234 = 51.1%	4 = 0.9%	192 = 41.9%	430 = 93.9%
Totals	254 = 55.5%	5 = 1.1%	199 = 43.4%	458 = 100%
Replacement Trees	294	0	0	294

Numbers are generated based on site conditions, proposed development, and City requirements. Significant trees are to be replaced at a 1:1 ratio; Landmark trees at a 3:1 ratio. Each significant tree removed beyond 35-percent retention must be replaced at a 3:1 ratio.

TREE NOTE
 REFER TO ARBORIST REPORT PREPARED BY TREE SOLUTIONS INC, DATED 2-25-2015



UNDERGROUND UTILITY NOTE
 UNDERGROUND UTILITIES ARE SHOWN IN THE APPROXIMATE LOCATION. THERE IS NO GUARANTEE THAT ALL UTILITY LINES ARE SHOWN, OR THAT THE LOCATION, SIZE AND MATERIAL IS ACCURATE. THE CONTRACTOR SHALL UNCOVER ALL INDICATED PIPING WHERE CROSSING, INTERFERENCES, OR CONNECTIONS OCCUR PRIOR TO TRENCHING OR EXCAVATION FOR ANY PIPE OR STRUCTURES, TO DETERMINE ACTUAL LOCATIONS, SIZE AND MATERIAL. THE CONTRACTOR SHALL MAKE THE APPROPRIATE PROVISION FOR PROTECTION OF SAID FACILITIES. THE CONTRACTOR SHALL NOTIFY ONE CALL AT 8-1-1 (WASHINGTON811.COM) AND ARRANGE FOR FIELD LOCATION OF EXISTING FACILITIES BEFORE CONSTRUCTION.

NO	DATE	BY	REVISIONS

TREE PRESERVATION PLAN
 TERRENE AT 132ND AVE NE
 PRELIMINARY PLAT
 3426059087
 CITY OF REDMOND WASHINGTON



5/18/15
 JOB NUMBER: 14-171
 SHEET NAME: TR-01
 SHT 9 OF 9